



Government of India  
Ministry of Earth Sciences



India Meteorological Department

## PRESS RELEASE - 5

Time of issue: 1530 hours IST

Dated: 16-05-2021

**Sub: Very Severe Cyclonic Storm “Tauktae” (pronounced as Tau’Te) over eastcentral Arabian Sea: Cyclone Warning for Gujarat & Diu coasts (Orange Message)**

Yesterday’s **Cyclonic Storm “Tauktae” (pronounced as Tau’Te)** over eastcentral and adjoining southeast Arabian Sea moved nearly northwards and intensified into a severe cyclonic storm in the same afternoon (1430 hrs IST of 15<sup>th</sup> May). Continuing to move further northwards, it intensified into a very severe cyclonic storm in the early hours (0230 hrs IST) of today, the 16<sup>th</sup> May, 2021.

Continuing to move northwards, it lay centered at 1130 hours IST over eastcentral Arabian Sea near latitude 15.7°N and longitude 72.7°E, about 120 km west-northwest of Panjim-Goa, 380 km south-southwest of Mumbai, 620 km south-southeast of Veraval (Gujarat) and 790 km southeast of Karachi (Pakistan).

It is very likely to intensify further during next 24 hours. It is very likely to move north-northwestwards and reach Gujarat coast in the evening hours of 17<sup>th</sup> & cross Gujarat coast between Porbandar & Mahuva (Bhavnagar district) around 18<sup>th</sup> May early morning.

The System is being monitored by Doppler weather RADAR Goa.

Forecast track and intensity are given in the following table:

Date/Time(IST)	Position (Lat. °N/ long. °E)	Maximum sustained surface wind speed (Kmph)	Category of cyclonic disturbance
16.05.21/1130	15.7/72.7	135-145 gusting to 160	Very Severe Cyclonic Storm
16.05.21/1730	16.5/72.4	140-150 gusting to 165	Very Severe Cyclonic Storm
16.05.21/2330	17.4/71.8	145-155 gusting to 170	Very Severe Cyclonic Storm
17.05.21/0530	18.2/71.3	150-160 gusting to 175	Very Severe Cyclonic Storm
17.05.21/1130	19.0/71.0	155-165 gusting to 185	Very Severe Cyclonic Storm
17.05.21/2330	20.2/70.8	155-165 gusting to 185	Very Severe Cyclonic Storm
18.05.21/1130	21.7/71.0	110-120 gusting to 135	Severe Cyclonic Storm
18.05.21/2330	23.4/71.6	50-60 gusting to 70	Deep Depression
19.05.21/1130	24.9/72.2	35-45 gusting to 55	Depression

### Warnings:

#### (i) Rainfall:

- **Kerala:** Light to moderate rainfall at many places with heavy to very to very heavy falls at isolated places on 16<sup>th</sup> and heavy falls at isolated places on 17<sup>th</sup> May.
- **Karnataka (coastal & adjoining Ghat districts):** Light to moderate rainfall at most places with heavy to very heavy falls at isolated places on 16<sup>th</sup>.
- **South Konkan & Goa:** Light to moderate rainfall at most places with heavy to very heavy falls at a few places and extremely heavy falls at isolated places over south Konkan & Goa and adjoining Ghat areas on 16<sup>th</sup> and heavy to very heavy falls at isolated places on 17<sup>th</sup> May.
- **North Konkan:** Light to moderate rainfall at most places with heavy to very heavy falls at isolated places on 16<sup>th</sup> and 17<sup>th</sup> May.

Contact: Cyclone Warning Division, Office of the Director General of Meteorology,  
India Meteorological Department, Ministry of Earth Sciences.

Phone: (91) 11-24652484, FAX: (91) 11-24643128, 24623220, E-mail: [cwdhq2008@gmail.com](mailto:cwdhq2008@gmail.com), Website: [rsmcnewdelhi.imd.gov.in](http://rsmcnewdelhi.imd.gov.in)

Spatial rainfall distribution: Isolated: <25%, A few: 26-50%, Many: 51-75%, Most: 76-100%

Rainfall amount (mm): Heavy rain: 64.5 – 115.5, Very heavy rain: 115.6 – 204.4, Extremely heavy rain: 204.5 or more.

- **Gujarat:** Light to moderate rainfall at many places very likely to commence over coastal districts of Saurashtra from today afternoon, with heavy to very heavy falls at isolated places over Saurashtra & Kutch, Diu and southern most Gujarat region with extremely heavy falls at isolated places on 17<sup>th</sup> and with heavy to very heavy falls at a few places over Saurashtra & Kutch and Diu & south Gujarat region with extremely heavy falls ( $\geq 20$  cm) at isolated places on 18<sup>th</sup>.
- **Rajasthan:** Light to moderate rainfall at many places with heavy to very heavy falls & extremely heavy falls at isolated places very likely over south Rajasthan on 18<sup>th</sup> & heavy to very heavy falls at isolated places over Rajasthan on 19<sup>th</sup> May.

#### (ii) Wind warning

- Gale wind speed reaching 135–145 kmph gusting to 160 kmph is prevailing over eastcentral Arabian Sea. It is likely to increase over eastcentral Arabian Sea becoming 145-155 kmph gusting to 170 kmph from 16<sup>th</sup> May mid-night.
- Gale winds speed reaching 80-90 kmph gusting to 100 kmph along & off south Maharashtra – Goa and adjoining Karnataka coasts on 16<sup>th</sup>, 50-60 kmph gusting to 70 kmph along & off north Maharashtra coast on 16<sup>th</sup>. It is likely to become 65- 75 kmph gusting to 85 kmph along & off north Maharashtra coast from 17<sup>th</sup> till 18<sup>th</sup> morning.
- Squally wind speed reaching 40-50 kmph gusting to 60 kmph likely over northeast Arabian Sea and along & off south Gujarat & Daman and Diu coasts from 16<sup>th</sup> morning and gradually increase becoming Gale winds speed reaching 150-160 kmph gusting to 175 kmph over northeast Arabian Sea and along & off Gujarat coast (Porbandar, Junagarh, Gir Somnath, Amreli, Bhavnagar) and 100 -120 kmph gusting to 135 kmph over Bharuch, Anand, south Ahmedabad, Botad, Surendranagar, 90 -100 kmph gusting to 120 kmph over Devbhoomi Dwarka, Jamnagar, Rajkot, Morbi districts of Gujarat from early hours of 18<sup>th</sup>. Gale winds speed reaching 70-90 kmph gusting to 100 kmph likely to prevail along & off Dadra, Nagar Haveli, Daman, Valsad, Navsari, Surat, Kheda districts from 17<sup>th</sup> mid-night till 18<sup>th</sup> morning.

#### (iii) Sea condition

- Sea condition over eastcentral Arabian Sea will be very high to Phenomenal on 16<sup>th</sup> May and over northeast Arabian Sea on 17<sup>th</sup> & 18<sup>th</sup> May.
- Sea conditions will be very rough to High along & off Maharashtra–Goa coasts on 16<sup>th</sup> May and along & off north Maharashtra coast on 17<sup>th</sup> Morning. It is very likely to be very rough to High along & off south Gujarat coast from 17<sup>th</sup> May morning and very high to Phenomenal from 17<sup>th</sup> midnight.

#### (iv) Storm surge warning

Tidal wave above astronomical tide is likely to inundate coastal areas as per details below:

About 3 meter (m) over Amreli, Gir Somnath, Diu, Bhavnagar, 2-3 m over Bharuch, Amreli, Anand, southern parts of Ahmedabad, 1-2 m over Surat, Navsari, Valsad, and 0.5 – 1m over the remaining coastal districts of Gujarat during the time of landfall.(Details given in Annexure-I).

**(v) Fishermen Warning**

- Total suspension of fishing operations over eastcentral Arabian Sea and along & off Karnataka-Goa–Maharashtra coasts.
- Total suspension of fishing operations over northeast Arabian Sea and along & off Gujarat coast from 17<sup>th</sup> May.
- The fishermen are advised not to venture into eastcentral Arabian Sea along & off Karnataka coast till 17<sup>th</sup> Morning and into eastcentral Arabian Sea and along & off Maharashtra–Goa coasts and into northeast Arabian Sea along & off Gujarat coast till 18<sup>th</sup> May.
- Those who are out at Sea over north Arabian Sea are advised to return to the coast.

**(vi) (A) Damage Expected over Porbandar, Amreli Junagarh, Gir Somnath Botad & Bhavnagar and coastal areas of Ahmedabad:**

- Total destruction of thatched houses/ extensive damage to kutcha houses. Some damage to pucca houses. Potential threat from flying objects.
- Bending/ uprooting of power and communication poles.
- Major damage to Kutcha and Pucca roads. Flooding of escape routes. Minor disruption of railways, overhead power lines and signaling systems.
- Widespread damage to salt pans & standing crops,. Blowing down of bushy trees.
- Small boats, country crafts may get detached from moorings.
- Visibility severely affected.

**(vi) (B) Damage Expected over Devbhoomi Dwarka, Kutch, Jamnagar, Rajkot & Morbi, Valsad, Surart, Vadodara, Bharuch, Navsari, Anand, Ahmedabad districts of Gujarat:**

- Major damage to thatched houses/ huts. Roof tops may blow off. Unattached metal sheets may fly.
- Minor damage to power and communication lines.
- Major damage to Kutcha and some damage to Pucca roads. Flooding of escape routes.
- Breaking of tree branches, uprooting of large avenue trees. Moderate damage to banana and papaya trees. Large dead limbs blown from trees.
- Major damage to coastal crops.
- Damage to embankments/ salt pans.

**(vii) Action Suggested:**

- Mobilise evacuation in vulnerable areas.
- Total suspension of fishing operations.
- Judicious regulation of rail and road traffic.
- People in affected areas to remain indoors.
- Movement in motor boats and small ships unsafe.

The system is under continuous surveillance and the concerned state governments are being informed regularly.

Kindly visit [www.rsmcnewdelhi.imd.gov.in](http://www.rsmcnewdelhi.imd.gov.in) and [www.mausam.imd.gov.in](http://www.mausam.imd.gov.in) for regular updates.

---

Contact: Cyclone Warning Division, Office of the Director General of Meteorology,  
India Meteorological Department, Ministry of Earth Sciences.

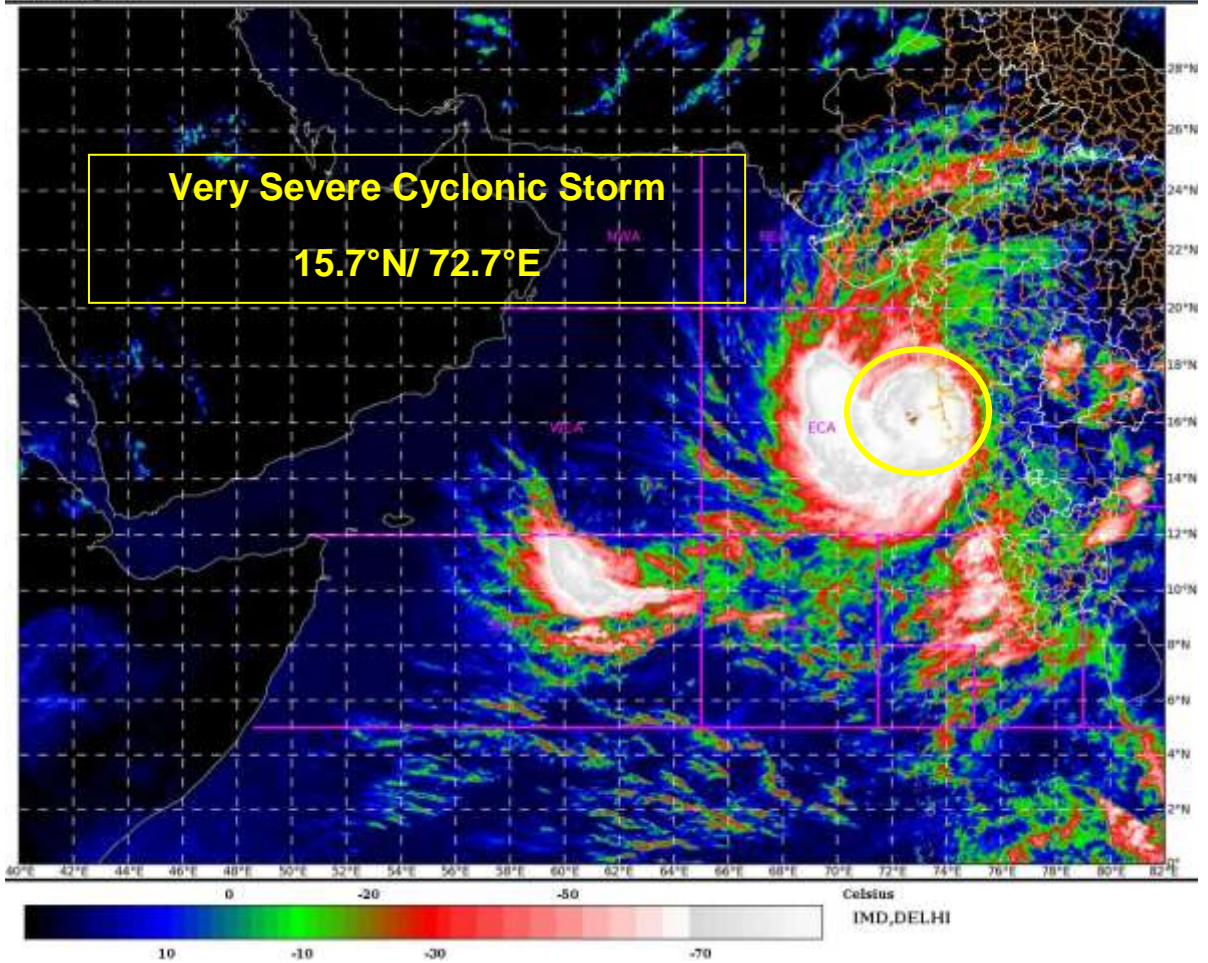
Phone: (91) 11-24652484, FAX: (91) 11-24643128, 24623220, E-mail:cwdhq2008@gmail.com, Website: [rsmcnewdelhi.imd.gov.in](http://rsmcnewdelhi.imd.gov.in)

Spatial rainfall distribution: Isolated: <25%, A few: 26-50%, Many: 51-75%, Most: 76-100%

Rainfall amount (mm): Heavy rain: 64.5 – 115.5, Very heavy rain: 115.6 – 204.4, Extremely heavy rain: 204.5 or more.

SAT : INSAT-3D IMG  
IMG\_TIR1\_TEMP 10.8 um  
ARABIAN SEA

16-05-2021/(0730 to 0756) GMT  
16-05-2021/(1300 to 1326) IST



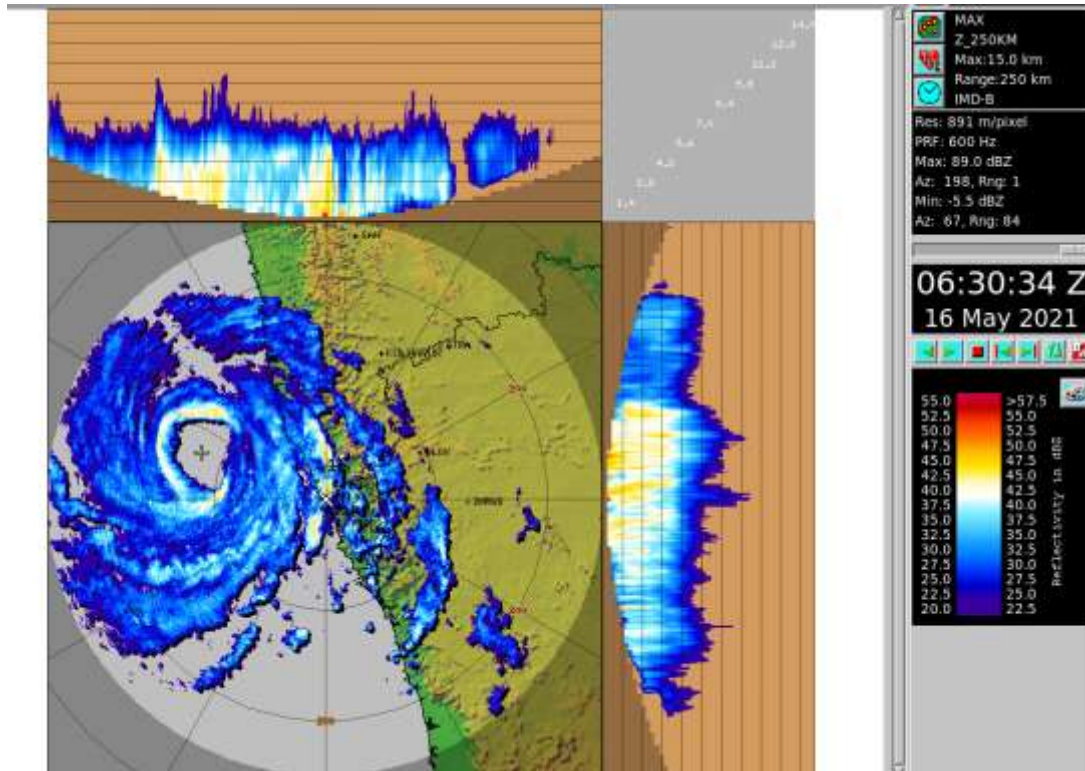
INSAT-3D Enhanced Colored imagery based on 0730 UTC of 16<sup>th</sup> May, 2021

Contact: Cyclone Warning Division, Office of the Director General of Meteorology,  
India Meteorological Department, Ministry of Earth Sciences.

Phone: (91) 11-24652484, FAX: (91) 11-24643128, 24623220, E-mail: [cwdhq2008@gmail.com](mailto:cwdhq2008@gmail.com), Website: [rsmcnewdelhi.imd.gov.in](http://rsmcnewdelhi.imd.gov.in)

Spatial rainfall distribution: Isolated: <25%, A few: 26-50%, Many: 51-75%, Most: 76-100%

Rainfall amount (mm): Heavy rain: 64.5 – 115.5, Very heavy rain: 115.6 – 204.4, Extremely heavy rain: 204.5 or more.



Reflectivity product from Doppler weather RADAR Goa at 0630 UTC of 16<sup>th</sup> May

Contact: Cyclone Warning Division, Office of the Director General of Meteorology,  
India Meteorological Department, Ministry of Earth Sciences.

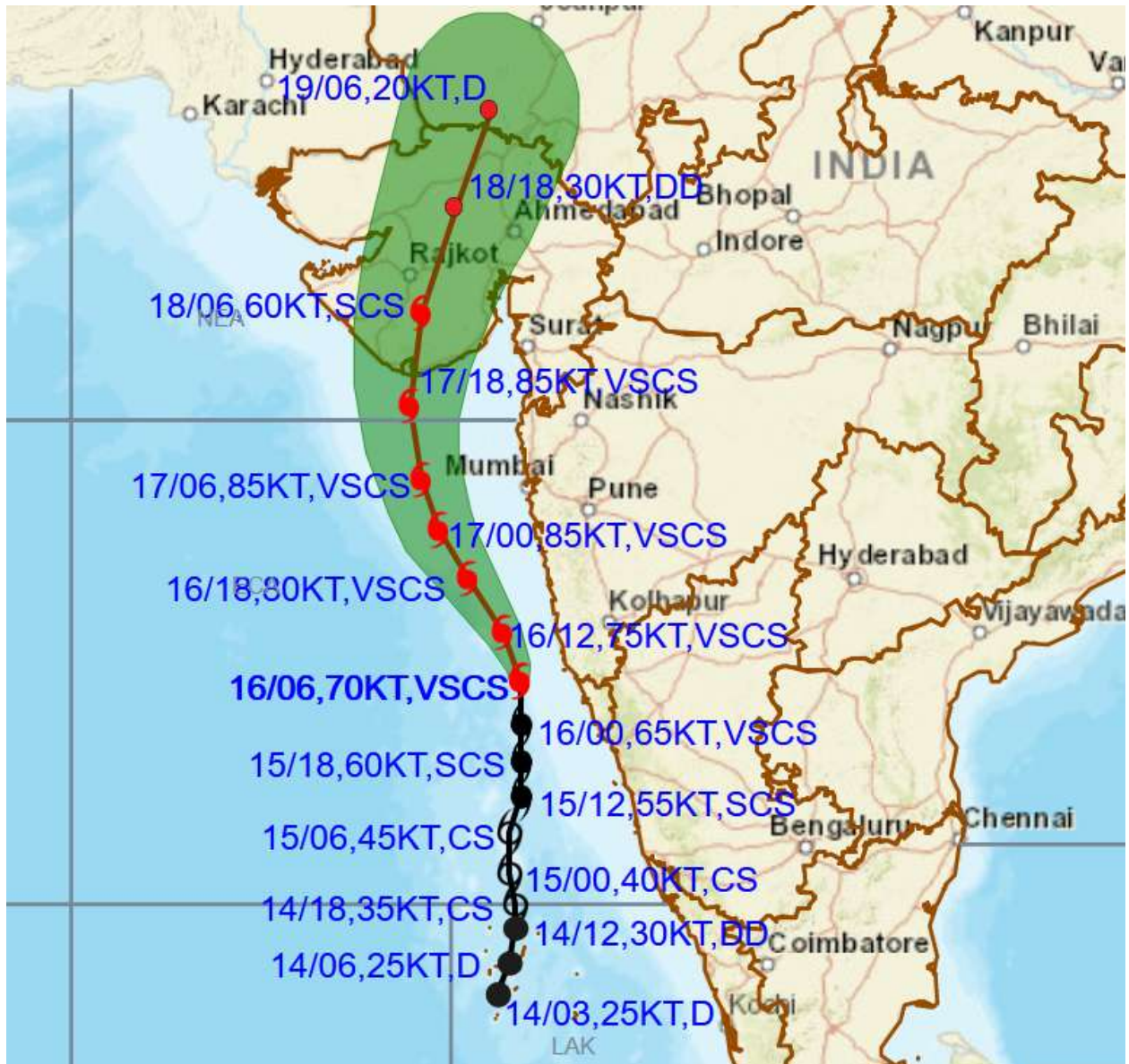
Phone: (91) 11-24652484, FAX: (91) 11-24643128, 24623220, E-mail: [cwdhq2008@gmail.com](mailto:cwdhq2008@gmail.com), Website: [rsmcnewdelhi.imd.gov.in](http://rsmcnewdelhi.imd.gov.in)

Spatial rainfall distribution: Isolated: <25%, A few: 26-50%, Many: 51-75%, Most: 76-100%

Rainfall amount (mm): Heavy rain: 64.5 – 115.5, Very heavy rain: 115.6 – 204.4, Extremely heavy rain: 204.5 or more.



**OBSERVED AND FORECAST TRACK ALONGWITH CONE OF UNCERTAINTY OF VERY SEVERE CYCLONIC STORM "TAUKTAE" OVER EASTCENTRAL ARABIAN SEA BASED ON 0600 UTC OF 16<sup>TH</sup> MAY, 2021**

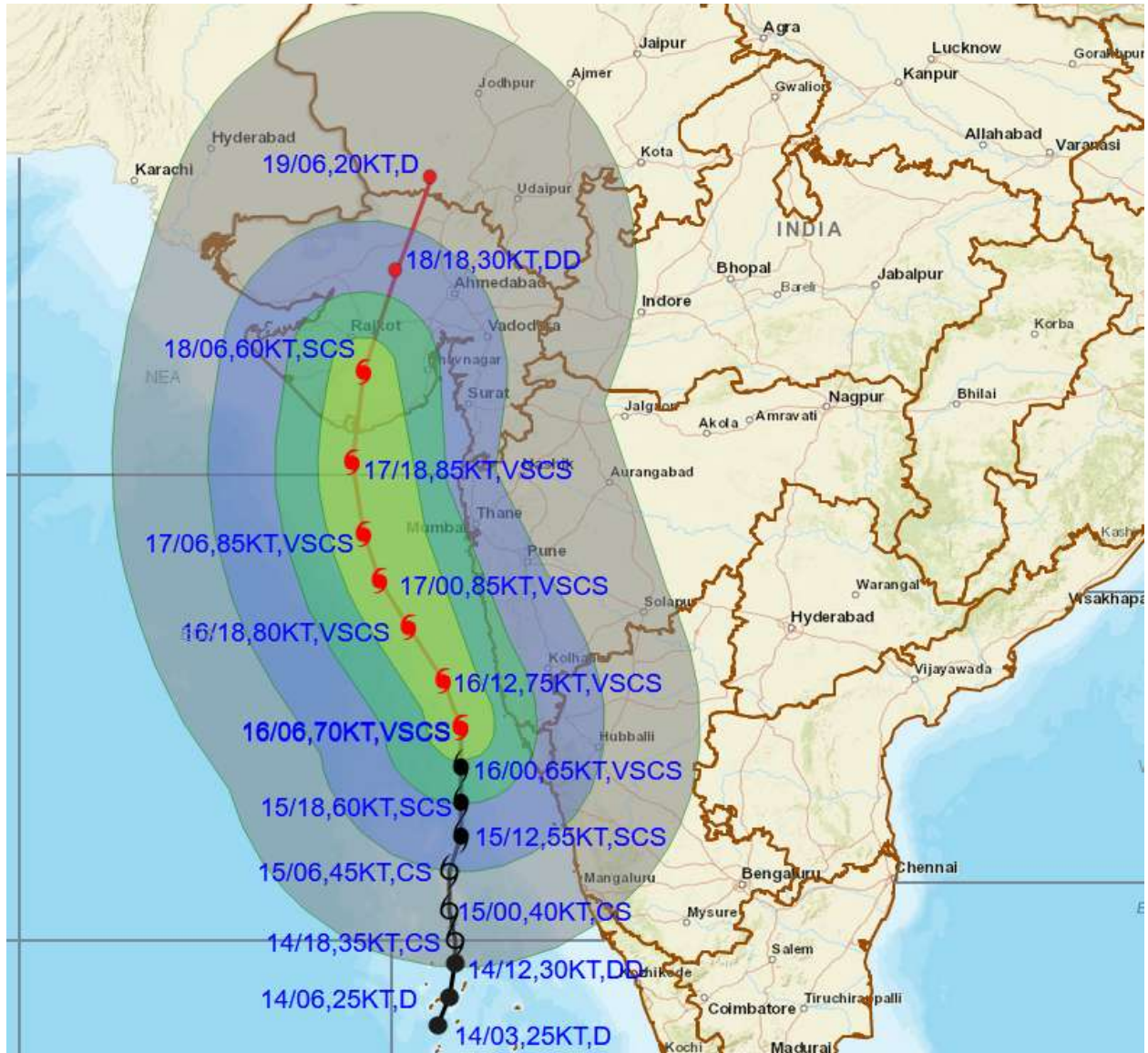


DATE/TIME IN UTC  
 IST=UTC + 0530  
 L: LOW PRESSURE AREA  
 WML: WELL MARKED LOW PRESSURE AREA  
 D: DEPRESSION (17-27 KT)  
 DD: DEEP DEPRESSION (28-33 KT)  
 CS: CYCLONIC STORM (34-47 KT)  
 SCS: SEVERE CYCLONIC STORM (48-63KT)  
 VSCS: VERY SEVERE CYCLONIC STORM (64-89 KT)  
 ESCS: EXTREMELY SEVERE CYCLONIC STORM (90-119 KT)  
 SuCS: SUPER CYCLONIC STORM ( $\geq$  120 KT)

● LESS THAN 34 KT  
 ⤵ 34-47 KT  
 ⤵ ≥ 48 KT  
 ■ OBSERVED TRACK  
 ■ FORECAST TRACK  
 ▲ CONE OF UNCERTAINTY



## OBSERVED AND FORECAST TRACK ALONGWITH CONE OF UNCERTAINTY OF VERY SEVERE CYCLONIC STORM "TAUKTAE" OVER EASTCENTRAL ARABIAN SEA BASED ON 0600 UTC OF 16<sup>TH</sup> MAY, 2021



**DATE/TIME IN UTC**

IST=UTC + 0530

L: LOW PRESSURE AREA

WML: WELL MARKED LOW PRESSURE AREA

D: DEPRESSION (17-27 KT)

DD: DEEP DEPRESSION (28-33 KT)

CS: CYCLONIC STORM (34-47 KT)

SCS: SEVERE CYCLONIC STORM (48-63KT)

VSCS: VERY SEVERE CYCLONIC STORM (64-89 KT)

ESCS: EXTREMELY SEVERE CYCLONIC STORM (90-119 KT)

SuCS: SUPER CYCLONIC STORM (≥ 120 KT)

- LESS THAN 34 KT
- 34-47 KT
- ≥ 48 KT
- OBSERVED TRACK
- FORECAST TRACK
- ▲ CONE OF UNCERTAINTY
- AREA OF MAXIMUM SUSTAINED WIND SPEED:
- 28-33 KT (52-61 KMPH)
- 34-49 KT (62-91 KMPH)
- 50-63 KT (92-117 KMPH)
- ≥ 64 KT (≥118 KMPH)

**IMPACT OVER THE SEA**

MSW (knot/kmph)	Impact	Action
28-33 (52-61)	Very rough seas	Total suspension of fishing operations
34-49 (62-91)	High to very high seas	Total suspension of fishing operations
50-63 (92-117)	Very high seas	Total suspension of fishing operations
≥ 64 (≥118)	Phenomenal	Total suspension of fishing operations

India Meteorological Department, Ministry of Earth Sciences.

Phone: (91) 11-24652484, FAX: (91) 11-24643128, 24623220, E-mail: [cwdhq2008@gmail.com](mailto:cwdhq2008@gmail.com), Website: [rsmcnewdelhi.imd.gov.in](http://rsmcnewdelhi.imd.gov.in)

Spatial rainfall distribution: Isolated: <25%, A few: 26-50%, Many: 51-75%, Most: 76-100%

Rainfall amount (mm): Heavy rain: 64.5 – 115.5, Very heavy rain: 115.6 – 204.4, Extremely heavy rain: 204.5 or more.

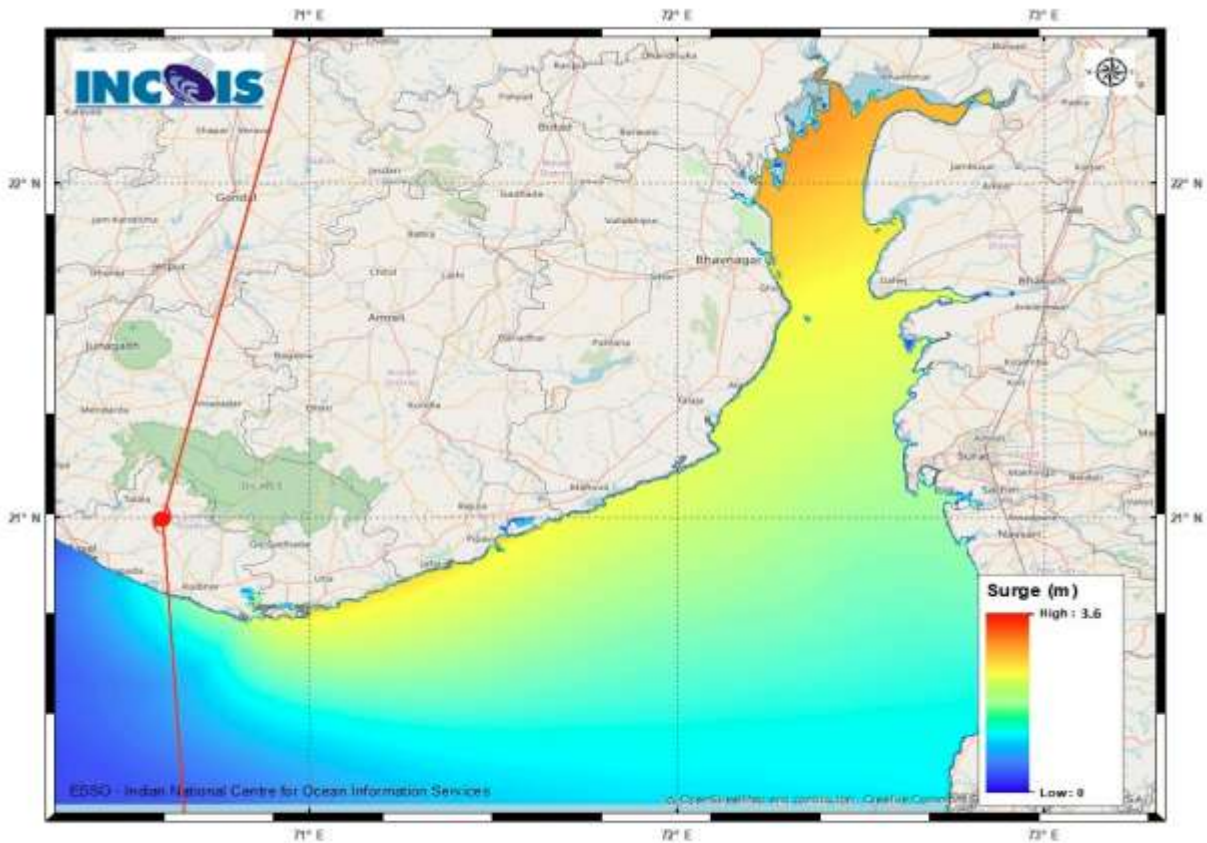


Figure: Storm Surge Map

Contact: Cyclone Warning Division, Office of the Director General of Meteorology,  
India Meteorological Department, Ministry of Earth Sciences.

Phone: (91) 11-24652484, FAX: (91) 11-24643128, 24623220, E-mail: cwdhq2008@gmail.com, Website: [rsmcnewdelhi.imd.gov.in](http://rsmcnewdelhi.imd.gov.in)

Spatial rainfall distribution: Isolated: <25%, A few: 26-50%, Many: 51-75%, Most: 76-100%

Rainfall amount (mm): Heavy rain: 64.5 – 115.5, Very heavy rain: 115.6 – 204.4, Extremely heavy rain: 204.5 or more.



**STORM SURGE HEIGHT INFORMATION:**

\* The below listed surge heights are over and above astronomical tide.

MANDAL/TALUK	DISTRICT	STATE / UNION TERRITORY	NEAREST PLACE OF HABITATION	STORM SURGE (m)	EXPECTED INUNDATION EXTENT (km)
Una	Junagadh	Gujarat	Una	1.2-3.6	Upto 0.9
Dhandlika	Ahmadabad	Gujarat	Mitli	0.8-3.3	Upto 4.3
Hansot Mahal	Bharuch	Gujarat	Kantivajal	1.0-2.3	Upto 3.3
Jafarabad	Amreli	Gujarat	Rohisa	2.5-2.6	Upto 0.1
Hazira	Surat	Gujarat	Hajira Ina (ina)	1.2-2.0	Upto 1.0
Kodinar	Gir Somnath	Gujarat	Kodinar	1.5-3.0	Upto 0.5
Mundra	Bhavnagar	Gujarat	Vadgam	2.4-2.4	Upto 0.9
Diu	Diu	Daman and Diu	Diu	1.6-2.9	Upto 0.7
Mahuva	Bhavnagar	Gujarat	Katpar (ct)	1.4-2.4	Upto 0.2
Bharuch	Bharuch	Gujarat	Kasva	1.3-2.3	Upto 0.1
Bhavnagar	Bhavnagar	Gujarat	Narbad	1.1-2.9	Upto 2.4
Borsad	Anand	Gujarat	Tithor	1.9-2.7	Upto 0.3
Chorasi	Surat	Gujarat	Bhimpor	1.4-1.8	Upto 1.0
Vagra	Bharuch	Gujarat	Harinagar	1.7-2.5	Upto 0.5
Valsad	Valsad	Gujarat	Malvan	1.1-1.5	Upto 0.3
Gandevi	Navsari	Gujarat	Mendhar	0.8-1.6	Upto 1.2
Dahanu	Palghar	Maharashtra	Narpad	0.5-1.2	Upto 1.0
Daman	Daman	Daman and Diu	Daman	0.9-1.3	Nil
Navsari	Navsari	Gujarat	Borsi	0.9-1.8	Upto 0.4
Olpad	Surat	Gujarat	Vansva	1.5-2.1	Upto 0.6
Veraval	Gir Somnath	Gujarat	Mul Dwarka	0.5-1.8	Upto 0.2
Palghar	Palghar	Maharashtra	Akkarpatti	0.4-1.0	Upto 0.5
Panvel	Raigarh	Maharashtra	Gavhan	0.7-0.7	Upto 0.5
Rajula	Amreli	Gujarat	Patva	1.1-2.7	Upto 0.3
Talaja	Bhavnagar	Gujarat	Talaja	1.6-2.3	Upto 0.2
Umargam	Valsad	Gujarat	Umargam	1.2-1.3	Upto 0.2
Uran	Raigarh	Maharashtra	Sheva	0.6-0.7	Upto 2.2
Vasai	Palghar	Maharashtra	Jalsar	0.8-0.9	Upto 1.1
Wada	Thane	Maharashtra	Juchandra	0.8-0.8	Upto 0.2
Bombay	Mumbai City	Maharashtra	Greater Bombay	0.6-0.7	Nil
Alibag	Raigarh	Maharashtra	Ranjankhar Divali	0.5-0.7	Upto 1.9
Maliya	Junagadh	Gujarat	Vadodra Dodiya	0.3-0.3	Upto 0.1
Mangaon	Raigarh	Maharashtra	Water Body	0.5-0.5	Upto 0.1

Contact: Cyclone Warning Division, Office of the Director General of Meteorology,  
India Meteorological Department, Ministry of Earth Sciences.

Phone: (91) 11-24652484, FAX: (91) 11-24643128, 24623220, E-mail: cwdhq2008@gmail.com, Website: [rsmcnewdelhi.imd.gov.in](http://rsmcnewdelhi.imd.gov.in)

Spatial rainfall distribution: Isolated: <25%, A few: 26-50%, Many: 51-75%, Most: 76-100%

Rainfall amount (mm): Heavy rain: 64.5 – 115.5, Very heavy rain: 115.6 – 204.4, Extremely heavy rain: 204.5 or more.